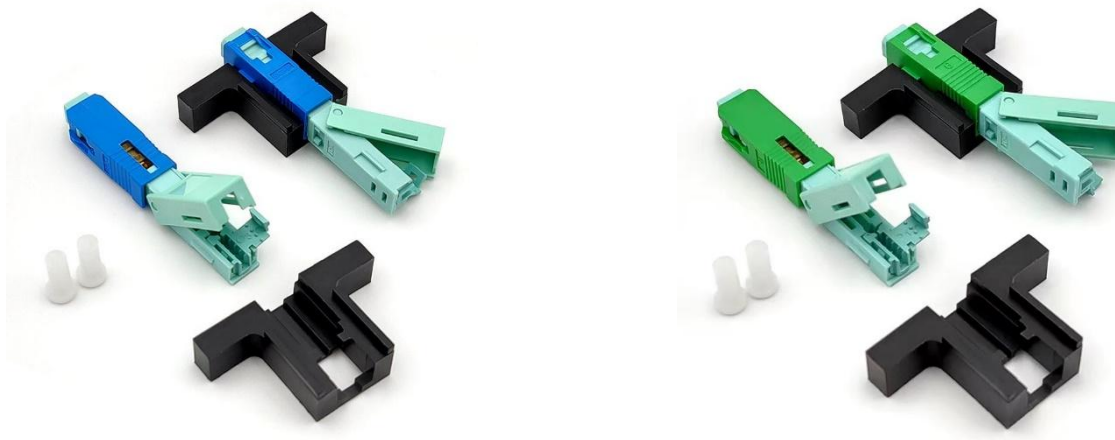


YX-08 Fast Connector



Product Structure :

Measured the Structure



Product length :

50mm ≤ L ≤ 60mm (≈ 53.5m)

Optical Characteristics :

Category	Specification
Aoolicablefor	Drop cable. Indoor cable
Fiber mod	Single mode or Multi mode
Fiber type	G.652D, G.657A2,
Fiber cable	3.0*2.0mm rubber-insulated optical cable ∅
Fiber diameter	0.125mm
Force holds 2 x 3mm cable type at the beginning the fast connector	≥ 30 N, loss ≤ 0.3 dB (sample cable length:3Mtest time: 2 minutes
Fiber lock	Lock holds fiber reliability, bears hang force ≥ 3.8 N, attenuation changes ≤ 0.2 dB
Working wavelength	1310 nm, 1490 nm, 1550 nm
Operation time	S About 50(no fiber cut)

Insertion Loss	dB	≤0.35
Insertion Loss Typical value	dB	0.3
Return Loss	dB	UPC≥50, APC≥55
Fastening strength of naked fiber	N	≥3
Tensile strength	N	≥45
Reusable	Time	≥10 time
Operating Temperature		-40~+85
On-line tensile strength (20N)	dB	ΔIL≤0.3
Mechanical durability (500 times)	dB	ΔIL≤0.3
Drop-off test (drop-off height4m, once per direction, totally 3 times)	dB	ΔIL≤0.3

Environmental performance requirements:

Category	Specification			Appearance
	Condition	IL Variation	RL Variation	
High TEMP	85°C, 96H	≤0.3	≤5	No mechanical damage, like deformation, cracking and untight
Low TEMP	-40°C, 96H	≤0.3	≤5	
Temperature Cycle	Cycle: 8 hours Total: 12 cycles / 96 hours Temperature Maintenance: 1 hour	≤0.3	≤5	
Temperature/ Humidity	85°C, 95%RH, 96H	≤0.3	≤5	
Immersion	25°C, 96H	≤0.3	≤5	
Salt Mis	5% Nacl, 6.5 < PH < 7.5, 35°C, 96H	≤0.3	≤5	

Mechanical Performance Requirement

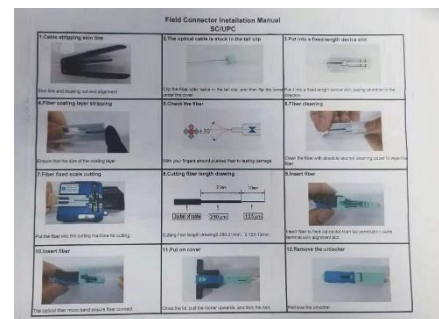
Category	Specification			Appearance
	Condition	IL Variation	RL Variation	
Impact	Height: 4m; 1 drop each axis; 3 cycles	≤0.3	≤5	No mechanical damage, like deformation, cracking and untight
Vibration	Frequency: 10 ~ 50HZ; Sweep: 45 times / min; amplitude: 0.75mm; Duration:30min each axial	≤0.3	≤5	
Torsional	Pull : 15N; The distance between Loading location and fast connector: L = 22-28cm; Rate : 10times / min. Times:	≤0.3	≤5	

Tensile	Pull : 50N; The distance between Loading location and fast connector: L =3M; Duration:1min	≤0.3	≤5	
---------	--	------	----	--

**Product Packaging Information :
Blister Box Packing**

	Size(CM)	17*12
	QTY(PCS/Box)	10
	N.W(KG/PCS)	0.0037
	N.W(KG/Box)	0.037
	G.W(KG/Box)	0.042

Adapter (supports strip and cut fiber):

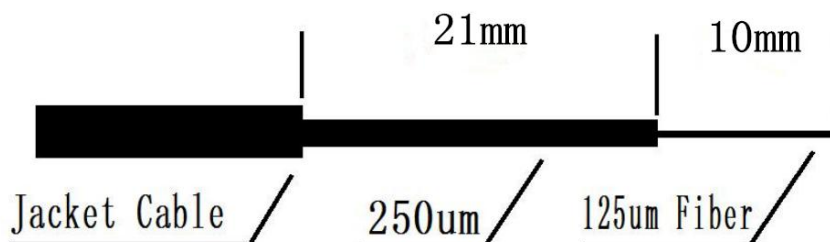


1 adapter / 50 fast connectors

1 Operation Manual/ 10 fast connector

Cleave

fiber :



Gift Box Packing(Inner packing) :

	Size(CM)	22.7*19.3*7.4
	QTY(Blister Box/Girt Box)	10
	N.W(KG/Box)	0.37
	G.W(KG/Box)	0.42

Outer Packing:

	Size(CM)	39.8*23.6*37.5
	QTY(Gift Box/Box)	10
	QTY(Pcs/Box)	1000
	N.W(KG/Box)	3.3
	G.W(KG/Box)	5